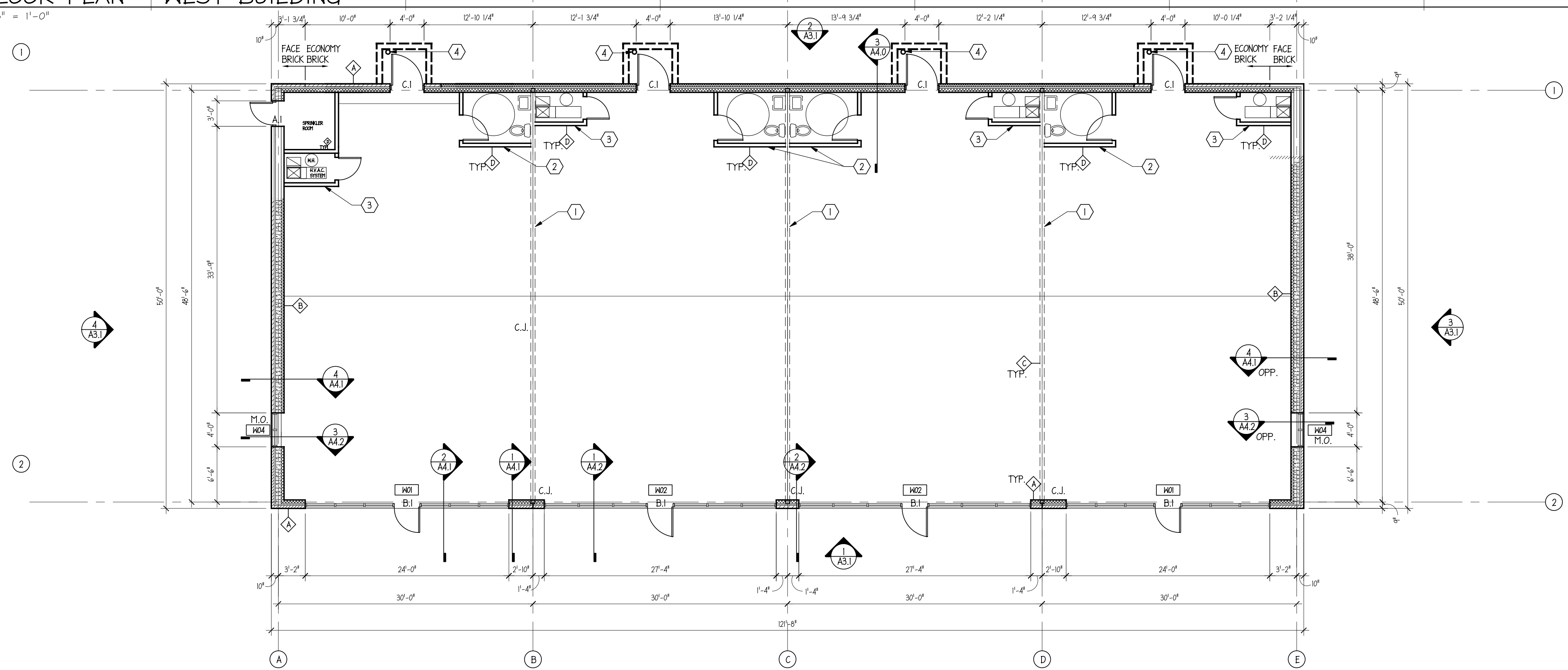


1 FLOOR PLAN - WEST BUILDING

1/8" = 1'-0"



2 FLOOR PLAN - EAST BUILDING

1/8" = 1'-0"

KEYED NOTES

- 1 FUTURE TENANT PARTITION WALL
- 2 FUTURE TOILET ROOM LOCATION
- 3 FUTURE MECHANICAL CLOSET
- 4 6" PIPE BOLLARD, CONCRETE FILLED; PAINT
- 5 SLAB TRANSITION AND FASCIA UNIT ABOVE
- 6 DRIVE-THRU WINDOW OPTION A - WITH SMALL CANOPY ONLY
- 7 DRIVE-THRU WINDOW OPTION B - WITH COVERED STRUCTURE

WALL TYPES

- A TYP. EXTERIOR WALL (@ BRICK VENEER):
3 5/8" BRICK VENEER W/ 2" AIR SPACE OVER
1/2" EXTERIOR GYPSUM BOARD SHEATHING ON
6" METAL STUDS @ 16" O.C. WITH
R-13 BATT INSULATION BETWEEN.
INTERIOR: 5/8" TYPE "X" GYPSUM BOARD OVER
4 MIL. POLY. VAPOR BARRIER
(*NOTE: AND/OR SPLIT-FACED C.M.U. - SEE ELEVATIONS)
- B TYP. EXTERIOR "SHEAR" WALL (WITH MASONRY VENEER):
3-5/8" MASONRY VENEER W/ 2" AIR SPACE WITH
8" NOMINAL C.M.U. BACK-UP.
3 5/8" MTL. STUDS @ 16" O.C. W/ 3 1/2" BATT INSULATION
6 MIL. POLY. VAPOR BARRIER W/ 5/8" GYPSUM BOARD
VERIFY REINFORCING REQUIREMENTS WITH
STRUCTURAL ENGINEER. PROVIDE BEAM POCKETS
AND BEARING PLATES AS REQUIRED TO RECEIVE
STEEL JOISTS. (* SEE ELEVATIONS FOR
LOCATION OF DIFFERENT MASONRY TYPES.)
- C TYP. 1-HOUR INTERIOR DEMISING WALL (NOT IN CONTRACT):
6" METAL STUDS W/ SOUND ATTENUATION BLANKETS AND
5/8" TYPE "X" GYPSUM BOARD BOTH SIDES WITH
1" TYPE "S" DRYWALL SCREWS @ O.C. TO
VERTICAL EDGES AND 12" O.C. TO INTERMEDIATE
STUDS. STAGGER JOINTS 24" O.C. EACH SIDE.
- D TYP. INTERIOR RESTROOM/MECHANICAL ROOM WALL (NOT IN CONTRACT):
3-5/8" METAL STUDS W/ SOUND ATTENUATION BLANKETS AND
5/8" GYPSUM BOARD BOTH SIDES

